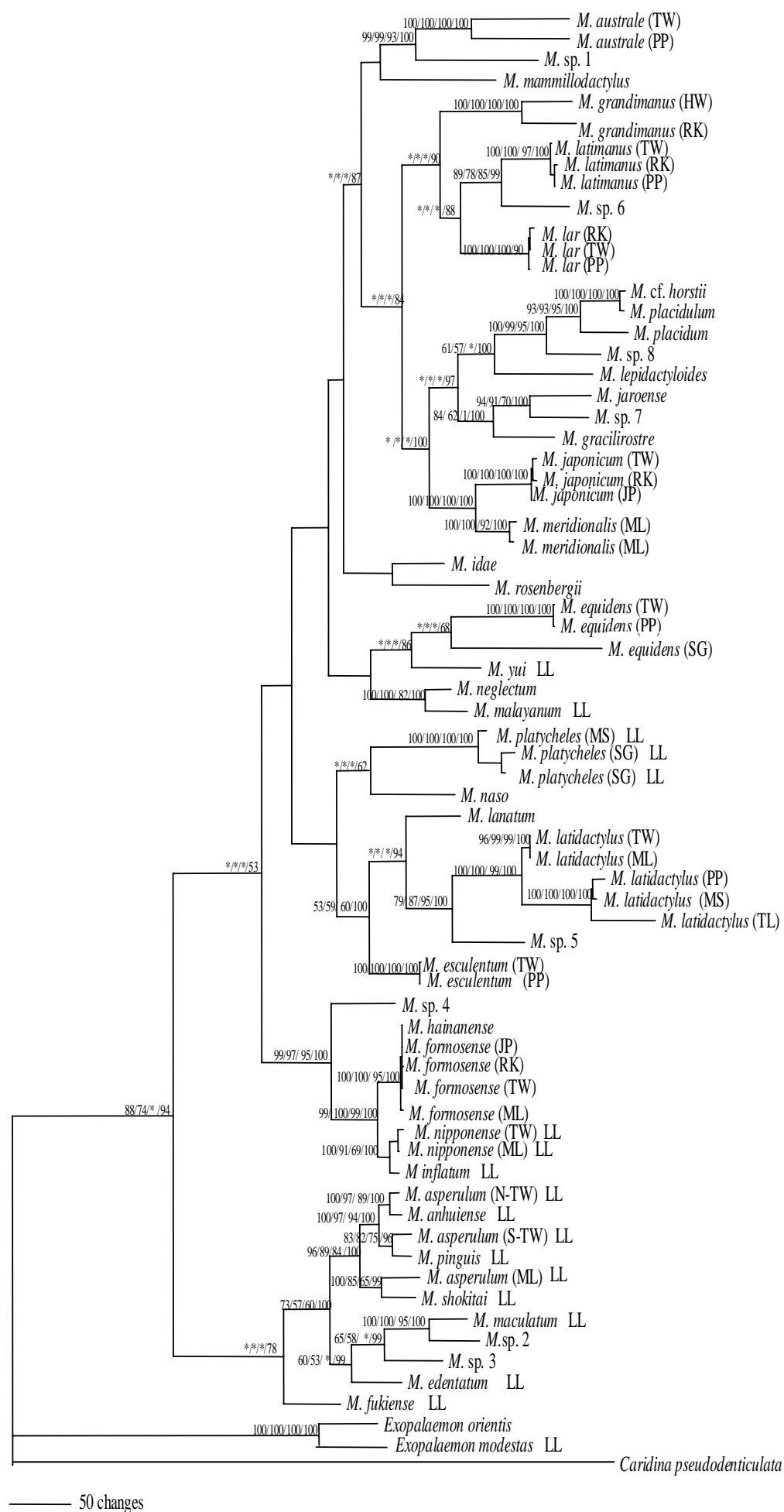
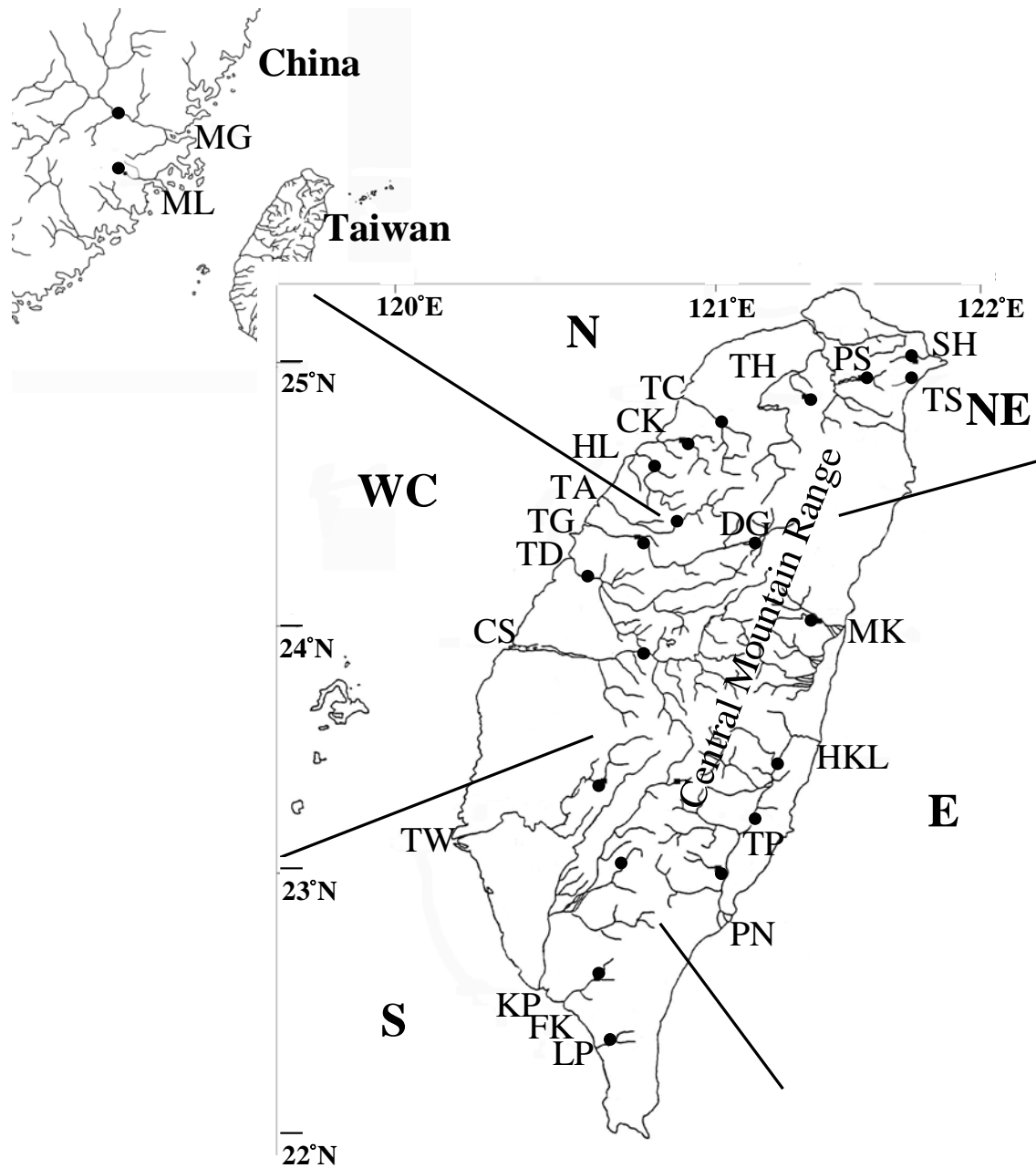


**Figure 4.** Phylogenetic relationships based on COI sequences represented by maximum parsimony tree. Bootstrap values are shown for nodes with support >50%, correspond to NJ, MP, ML and Bayesian posterior probabilities. LL, land-locked species. Only the specimens collected from multiple localities have showed the locality codes in parentheses. Locality codes are indicated in Table1. Astral (\*) indicate bootstrap value < 50.



**Figure 5.** Phylogenetic relationships based on combined 16S and COI data represented by maximum parsimony tree, numbers on branches indicated bootstrap values for NJ, MP, ML analyses and Bayesian posterior probabilities. LL, land-locked species. Only the specimens collected from multiple localities have showed the locality codes in parentheses. Locality codes are indicated in Table 1. Astral (\*) indicate bootstrap value < 50



**Fig. 6.** Map of Taiwan showing the sampling localities of *Macrobrachium asperulum* and the geographical regions. Sampling sites indicated by black dots. Codes of sampling localities are indicated in Table. 1. N, NE, northern and northeastern region; CW, central west region; S, southern region; E, eastern region.